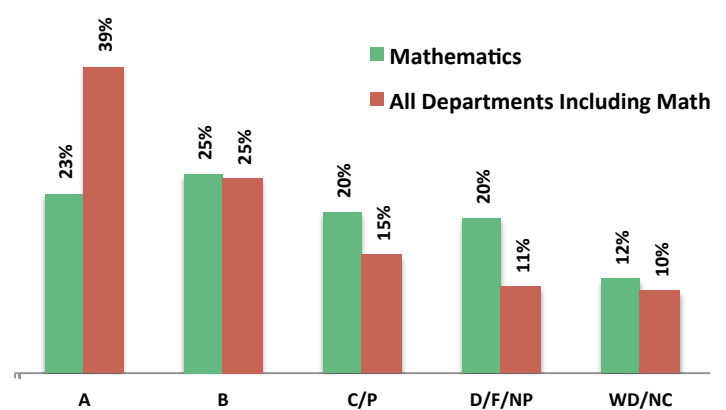
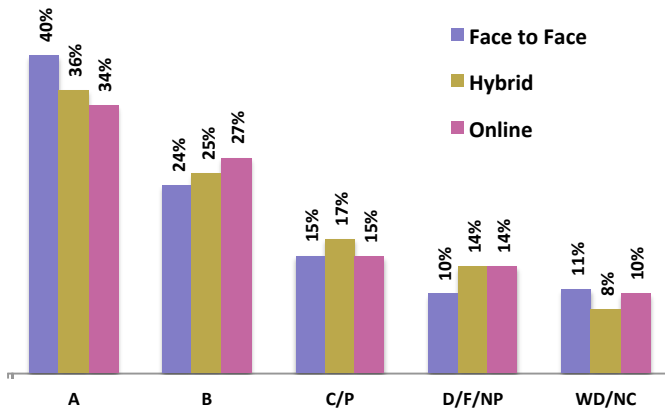
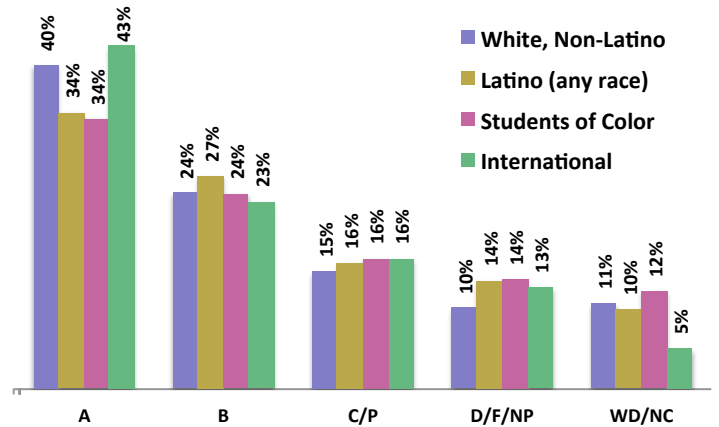
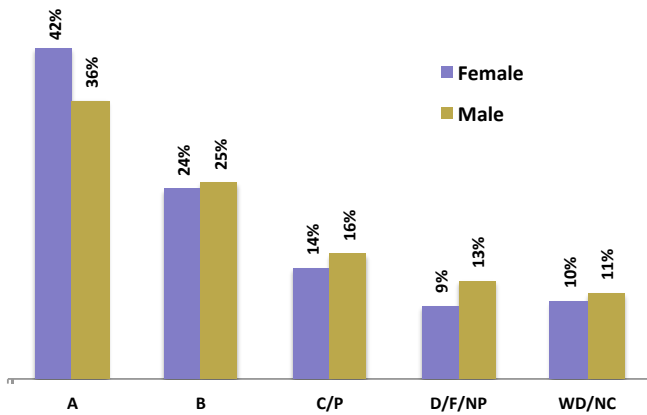
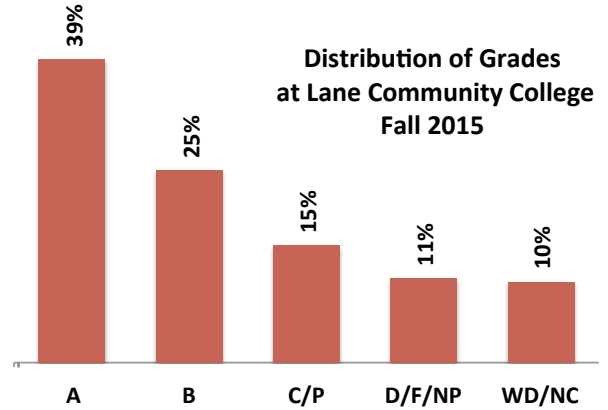


Grade Distributions

The chart at the right shows the distribution of over 22,000 grades awarded in credit courses at Lane Community College in Fall 2015. This excludes grades of Incomplete and Audit, College Now, and sections with fewer than six enrollments. Charts below compare grade distributions for subgroups of students or courses. Math is featured because of its unusual pattern (more B's than A's), but grade distributions for all 14 departments are given in the table.

P = Pass; NP = No Pass; WD = Withdraw; NC = No Basis for Grade.



Grade	Institute for Sustainable Practices	Florence	Culinary Arts & Hospitality	Academic Learning Skills	Cooperative Education	Counseling	Student Life & Leadership	Child & Family Education	Women's Programs	Advanced Technology	Flight Technology	Art & Applied Design	Music, Dance & Theatre Arts	Business	Computer Info. Technology	Lang., Lit. & Communication	Health Professions	Health & Physical Ed.	Mathematics	Science	Social Science	All Departments
A	36%	44%	39%	39%	72%	53%	55%	52%	74%	53%	19%	49%	58%	37%	51%	35%	42%	49%	23%	32%	33%	39%
B	26%	15%	26%	26%	17%	19%	36%	25%	0%	24%	33%	25%	18%	25%	21%	29%	29%	16%	25%	29%	25%	25%
C/P	13%	7%	13%	14%	0%	13%	0%	11%	26%	12%	43%	8%	10%	14%	10%	12%	19%	13%	20%	18%	18%	15%
D/F/NP	15%	4%	18%	10%	0%	6%	0%	7%	0%	4%	3%	7%	6%	14%	12%	10%	6%	10%	20%	10%	13%	11%
WD/NC	10%	30%	4%	11%	11%	9%	9%	6%	0%	7%	2%	11%	8%	9%	7%	14%	4%	13%	12%	11%	11%	10%
# Grades	87	219	246	1,154	38	480	11	233	68	588	190	1,222	939	869	1,216	3,042	1,853	2,294	2,997	1,937	2,908	22,591