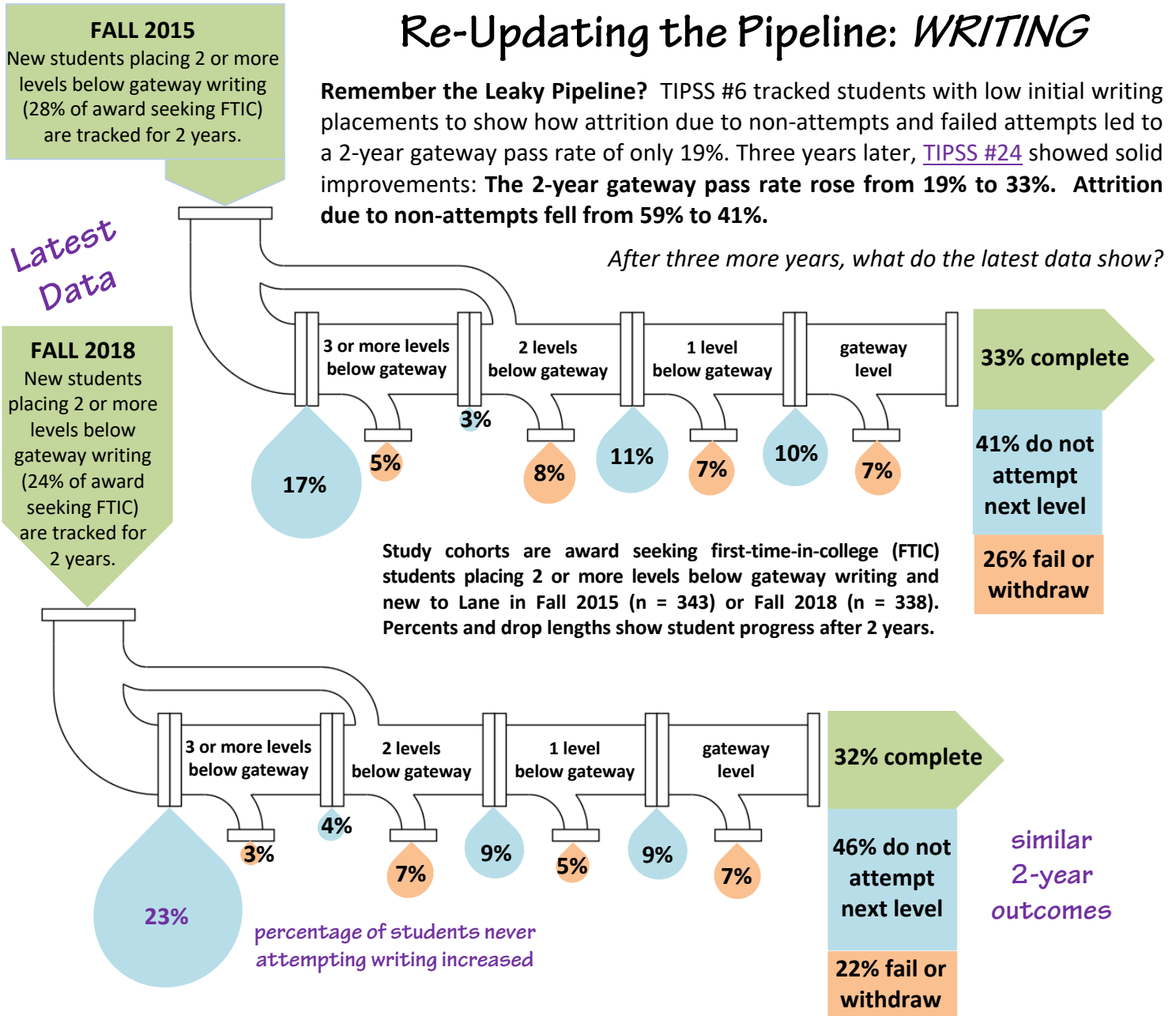


Re-Updating the Pipeline: *WRITING*



Improvements from 2012 to 2015 were maintained but no further advanced from 2015 to 2018.

- The two-year gateway writing completion rate fell slightly from 33% to 32%.
- Attrition due to failure or withdrawal fell from 26% to 22%.
- Attrition due to non-attempts rose from 41% to 46%.
- Of concern: the percentage of these students who never attempted a writing class within 2 years, after falling from 32% to 17% in the previous update, rebounded from 17% to 23%.

What more can we do to encourage students to enroll in needed writing courses? What more can we do to consolidate and build on earlier gains in writing outcomes for low-placing students?

Please share your ideas and recommendations by emailing guidedpathways@lanec.edu.