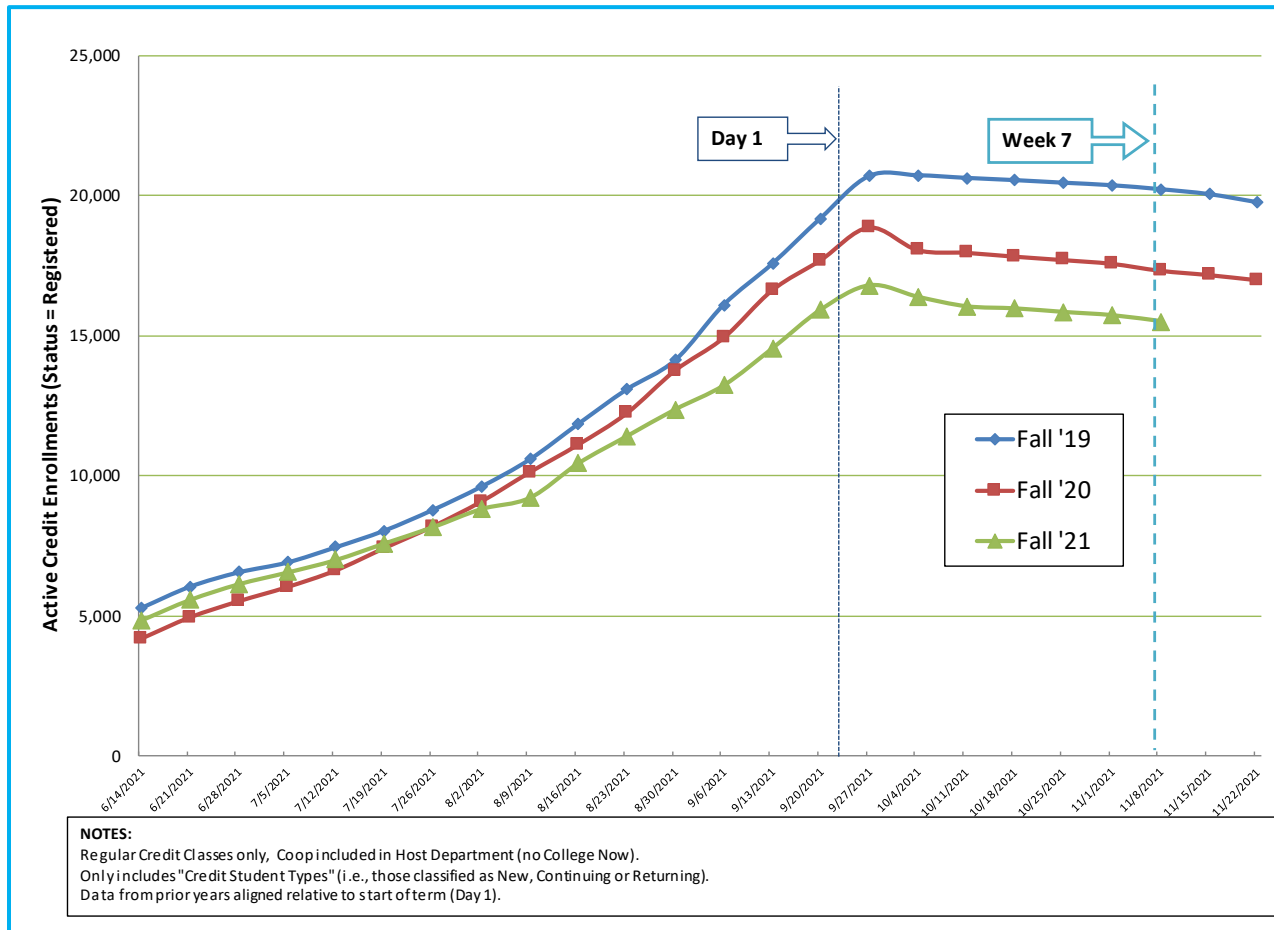


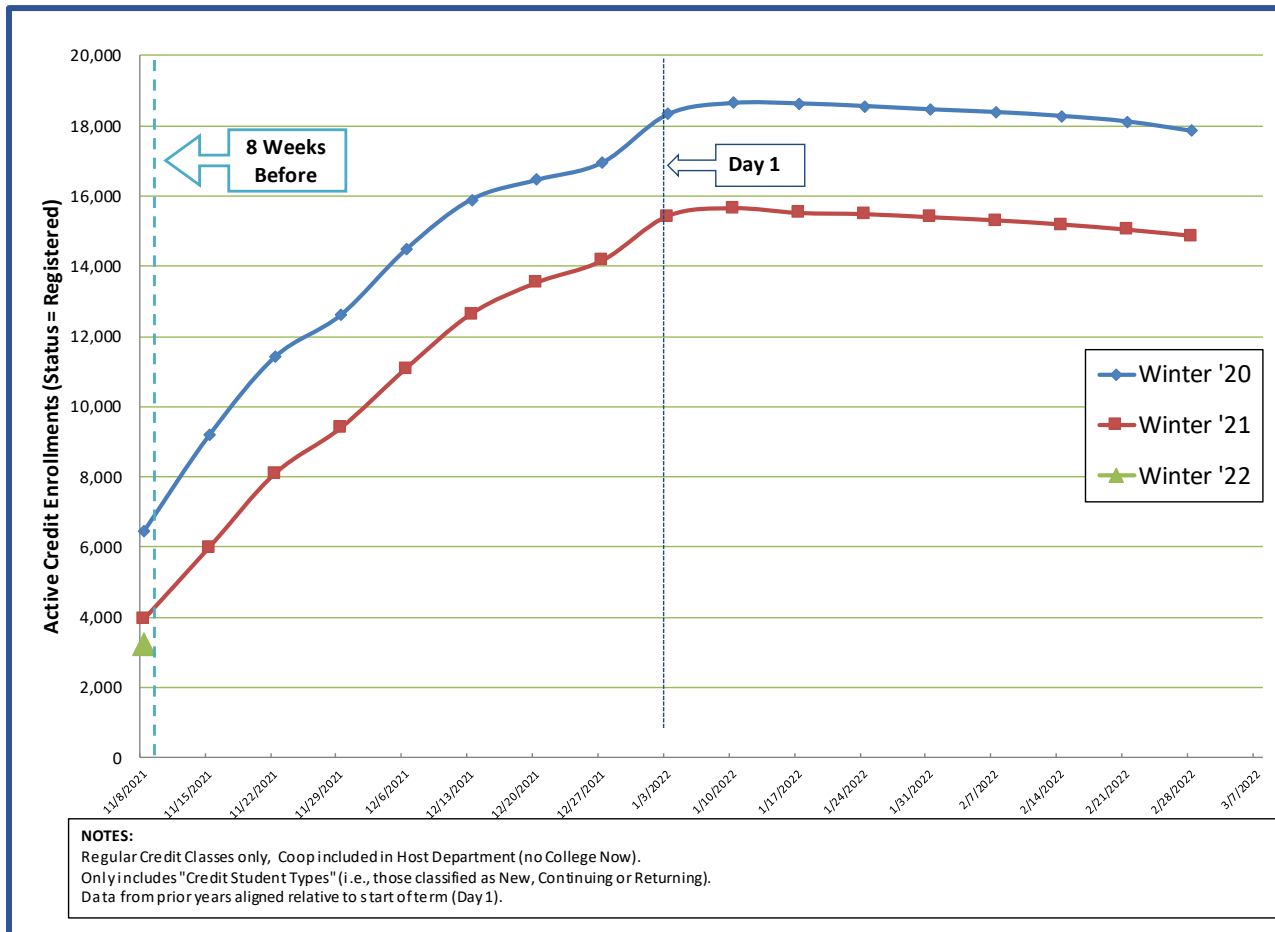
Fall 2021 Credit Enrollment Overview – start of Week 7



Credit Course Enrollment Comparison Fall Term (start of Week 7)

Credit Courses only (Coop in Host Dept and No College Now)	Fall 2020 Week 7 (11-10-20)	Fall 2021 Week 7 (11-8-21)	Percent Difference (AY21-to-AY22) in Enrollments
Departments (with greater than 100 enrollments)	Enrollments	Enrollments	
Academic Learning Skills	162	176	9%
Advanced Technology	737	723	-2%
Arts & Humanities	4,739	4,203	-11%
Aviation Academy	239	160	-33%
Business	790	692	-12%
Culinary & Hotel/Rest/Tour Mgmt	137	91	-34%
Computer Info Technology	762	694	-9%
Counseling	231	169	-27%
Health & Physical Ed	908	1,046	15%
Health Professions	1,992	1,955	-2%
Mathematics	1,842	1,480	-20%
Science	2,053	1,899	-8%
Social Science	2,652	2,157	-19%
Total College Credit Enrollments	17,321	15,508	-10.5%

Winter 2022 Credit Enrollment Overview – 8 Weeks Before Day 1



Credit Course Enrollment Comparison Winter Term (8 Weeks Before Day 1)

Registration opened Monday, November 1st

Credit Courses only (Coop in Host Dept and No College Now)	Winter 2021 8 Wks Before (11-10-20)	Winter 2022 8 Wks Before (11-8-21)	Percent Difference (AY21-to-AY22) in Enrollments
Departments (with an average of 100+ enrollments)	Enrollments	Enrollments	
Academic Learning Skills	18	15	-17%
Advanced Technology	92	74	-20%
Arts & Humanities	668	910	36%
Aviation Academy	18	12	-33%
Business	261	193	-26%
Culinary & Hotel/Rest/Tour Mgmt	28	22	-21%
Computer Info Technology	153	152	-0.7%
Counseling	22	16	-27%
Health & Physical Ed	182	153	-16%
Health Professions	332	211	-36%
Mathematics	389	253	-35%
Science	808	624	-23%
Social Science	711	577	-19%
Total College Credit Enrollments	3,943	3,220	-18.3%